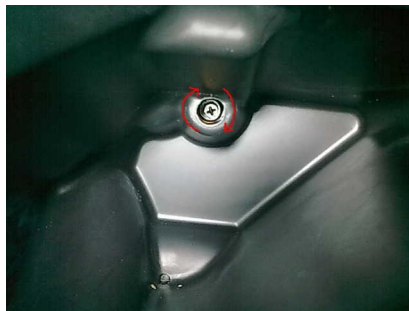


Regulation Dimmed Bundle XMAX m.y. 2010-2011

Let's remove the rubber cork as shown in the picture.



You will perceive the head of a cross screw, get a screwdriver to turn the screw right to left or vice versa if you need to lower or to lift the bright bundle:



This procedure can also be applied for the regulation of the dazzling bundle which is placed on the opposite side.

Here you are the picture that shows the value of the correct orientation of the dimmed bundle:

